

software^{AG}

ARIS as part of Application Life Cycle Management



ProcessForum
Changing the World - One Process at a Time

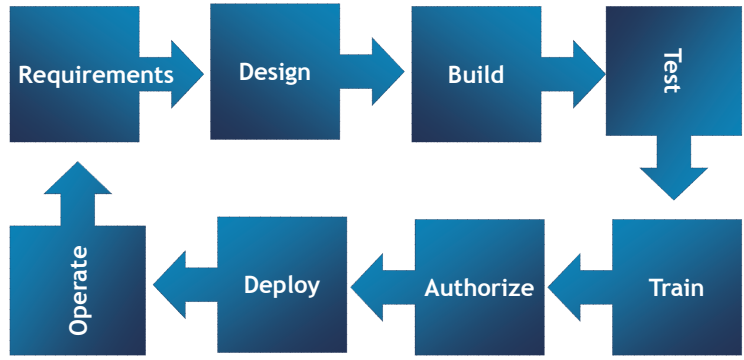
Dina Jacobs, CEO triVector
8 June 2011

8th June 2011 | ProcessForum 2011 | 1

software^{AG}

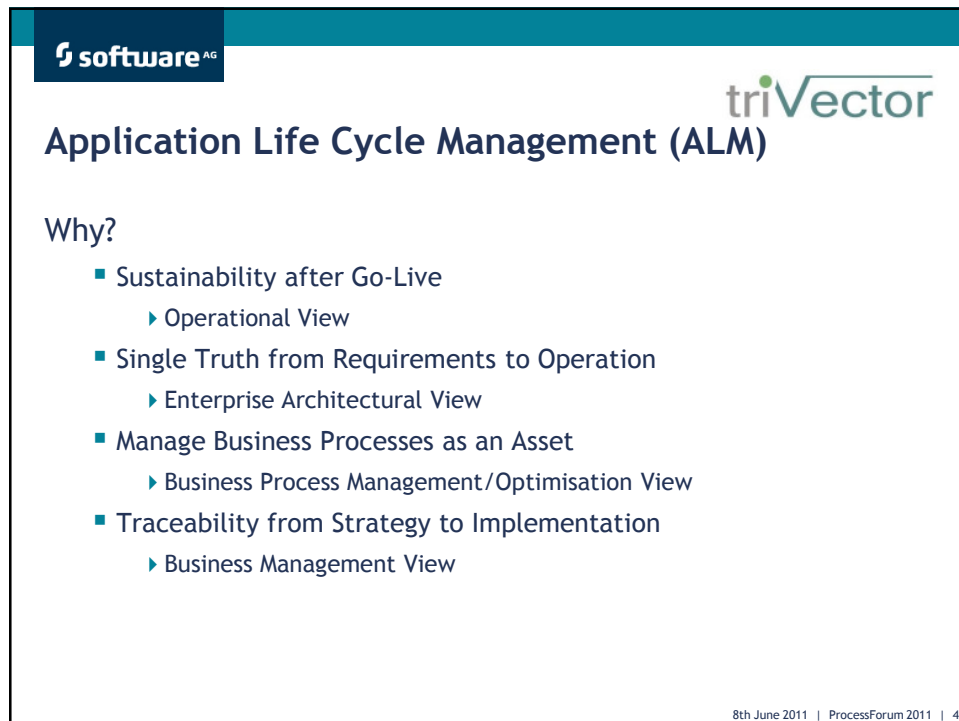
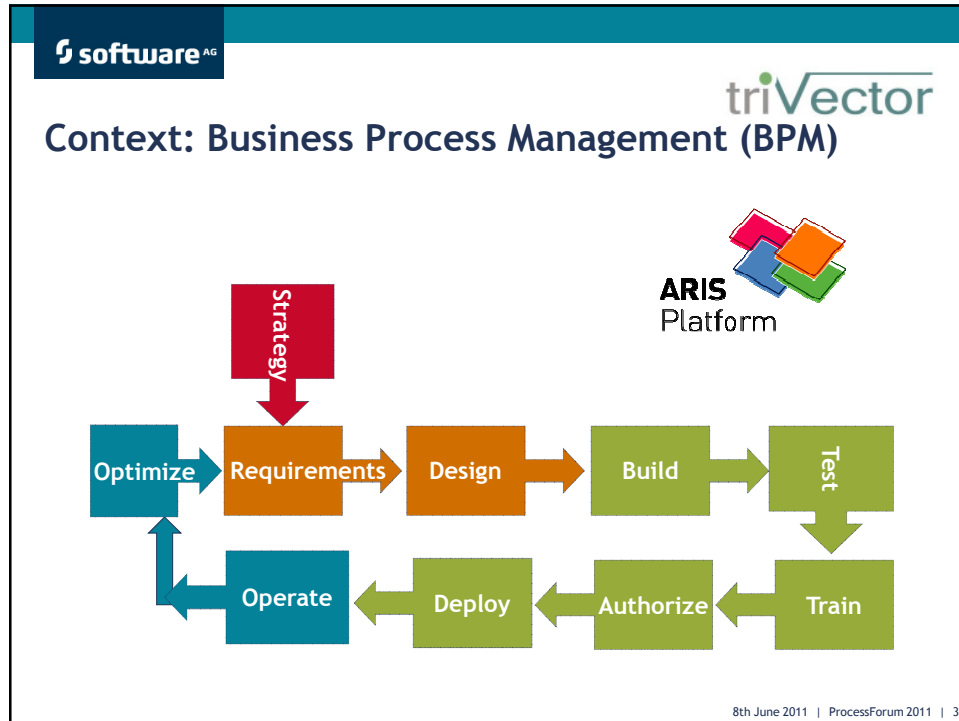
triVector

Application Life Cycle Management (ALM)



```
graph TD; R[Requirements] --> D[Design]; D --> B[Build]; B --> T[Test]; T --> Tr[Train]; Tr --> A[Authorize]; A --> De[Deploy]; De --> O[Operate]; O --> R;
```

8th June 2011 | ProcessForum 2011 | 2

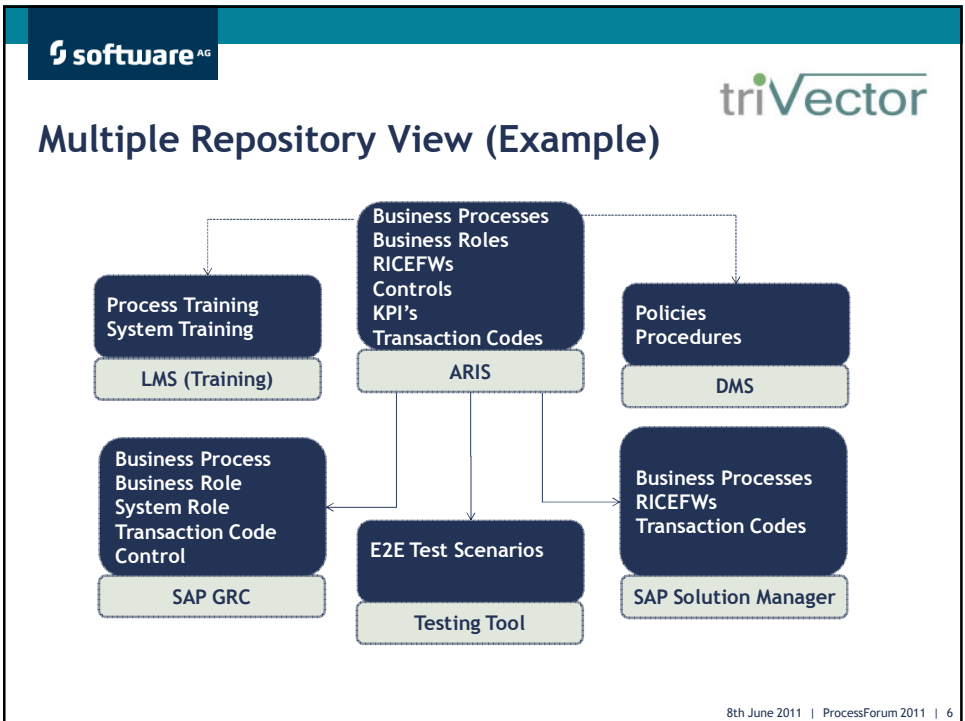


software AG triVector

Critical Success Factors for ALM

- Awareness of the importance of ALM
 - Pre-defined Method / Parallel Approach / Post Project Alignment
- Mandate
 - Ownership / Governance across functional areas
- Conceptual Design of the Single Logical Repository
- Change Management Process
 - Master / source identification and replication
- Technical Integration of the Physical Repositories
 - ARIS for SAP / SAP Solution Manager / Testing Tool /
- Health Check Automation
 - Quality assurance reports
 - SAP Usage Analysis

8th June 2011 | ProcessForum 2011 | 5



software AG triVector

Multiple Repositories (Example)

- ARIS** ARIS for SAP
- Solman** SAP Solution Manager
- DMS** Document Management System (Sharepoint)
- HPQC** HP Quality Centre (Testing Tool)
- SPP** SAP Productivity Pack (Part of Learning Management)
- SAP GRC** SAP Governance , Risk and Compliance
- OrgPlus** OrgPlus (Organisational Structure)

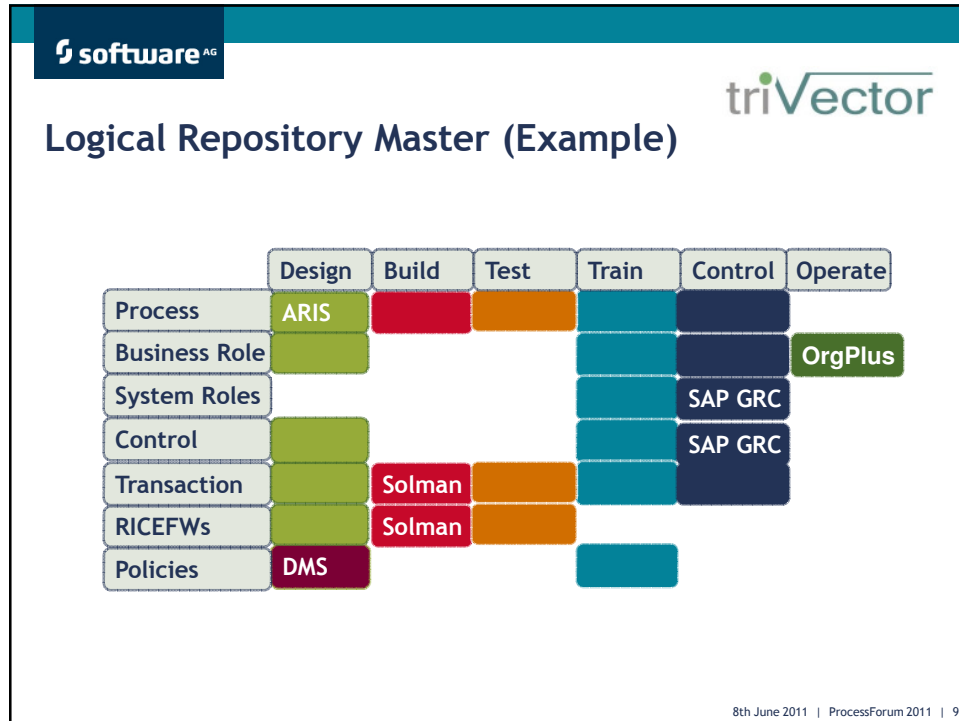
8th June 2011 | ProcessForum 2011 | 7

software AG triVector

Logical Repository Analysis (Example)

	Design	Build	Test	Train	Control	Operate
Process	ARIS	Solman	HPQC	SPP	SAP GRC	
Business Role	ARIS			SPP	SAP GRC	OrgPlus
System Roles				SPP	SAP GRC	
Control	ARIS			SPP	SAP GRC	
Transaction	ARIS	Solman	HPQC	SPP	SAP GRC	
RICEFWs	ARIS	Solman	HPQC			
Policies	DMS			SPP		

8th June 2011 | ProcessForum 2011 | 8



software AG triVector

Technical Integration of Physical Repositories

- ARIS and SAP Solution Manager Synchronisation and Accelerators
 - ▶ Levelling / Interim Structure / BPMN vs EPC
 - ▶ Global vs Implementation vs Maintenance projects in SAP Solman
 - ▶ Keywords e.g. For RICEFWs
- SAP Solution Manager Method
 - ▶ Documentation / Configuration / Customisation
- Test Scenarios (End-to-end Scenarios)
 - ▶ ARIS to Solution Manager to HPQC/WorkSoft
- Training
 - ▶ ARIS Publisher link to learning management system
- Authorisation
 - ▶ ARIS and SAP Governance, Risk and Compliance (SAP GRC)

8th June 2011 | ProcessForum 2011 | 10

software AG **triVector**

Integration of Physical Repositories

ARIS and SAP Solution Manager Synchronisation.

Refer to the Software AG ARIS for SAP training course

8th June 2011 | ProcessForum 2011 | 11

software AG **triVector**


Integration of Physical Repositories


RICEFW-C	RICEFW-C: CONVERSION
RICEFW-E	RICEFW-E: ENHANCEMENT
RICEFW-F	RICEFW-F: FORM
RICEFW-I	RICEFW-I: INTERFACE
RICEFW-R	RICEFW-R: REPORT
RICEFW-W	RICEFW-W: WORKFLOW
SAP-BPC	SAP-BPC
SAP-BW	SAP-BW
SAP-CO	SAP-CO
SAP-CRM	SAP-CRM
SAP-FI	SAP-FI
SAP-MM	SAP-MM
SAP-PP	SAP-PP
SAP-SD	SAP-SD

Accelerators for synchronisation ARIS and SAP Solution Manager:

- Prefix
- Interim structure
- BPMN to EPC
- Keyword population

8th June 2011 | ProcessForum 2011 | 12





SAP Solution Manager

Business Blueprint offers central, focused, up-to-date, and easy-to-understand core process documentation. The primary focus is to document the process steps, code, systems and interfaces.

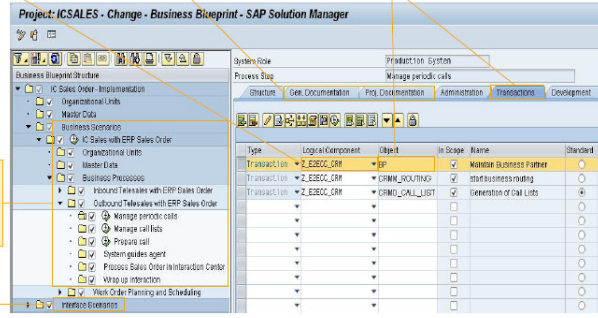
System information

Documents, links

Transactions, custom development

3 level hierarchy


- Business scenario
- Business processes
- Business steps




= Key elements of Solution Documentation

Interfaces

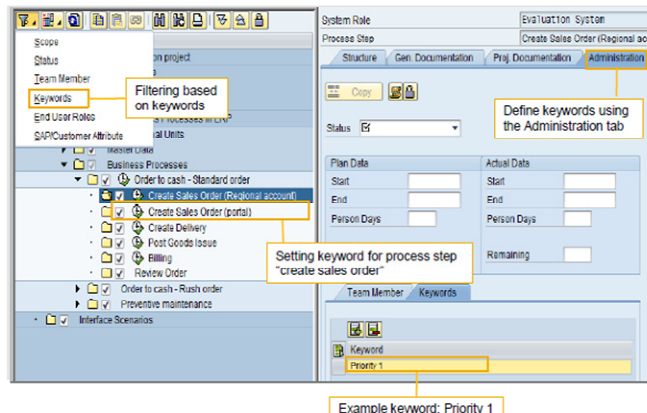
8th June 2011 | ProcessForum 2011 | 13





SAP Solution Manager: Keywords

Keywords are defined to specify and differentiate process structure elements



Example keyword: Priority 1

Features

- Name dedicated to process structure elements (business scenario, process or process step level)
- Specific keywords set can be created on project level

Benefits

- Possibility to differentiate business processes, e.g "High priority" processes
- Good ad-hoc reporting options using project reporting or filters

Limitations

- Structure element associations with keywords can't be transferred to SAP Solution Manager solutions

8th June 2011 | ProcessForum 2011 | 14

software AG **triVector**

SAP Solution Manager : Interfaces

Interface	Source	Original Name	Sending L...	Receiving ...	Technology	Type
MANAGE TRAVEL C CARD CLE...			SAP ERP E...	CRM SERV...	EDI	Asynchron...

8th June 2011 | ProcessForum 2011 | 15

software AG **triVector**

Configuration, Development, Testing

Configuration Structure

- Configuration Structure
- ECO Implementation Project
- Configuration
- Organizational Units
- Master Data
- Business Scenarios
- Sales and Service Processes in ERP
- Organizational Units
- Master Data
- Business Processes
- Account Processing in ERP
 - Search and display accounts
 - Create and maintain accounts
 - Maintain account details
 - Contact account
 - Print account overview
- Assemble-to-Order Processing in ERP
 - Create assemble-to-order
 - Select inquiry or quotation
 - Determine business partners
 - Create order items
 - Perform material configuration
 - Create returnable packaging items
 - Check availability, schedule order, and crea
 - Estimate costs

Configuration

Doc	LogicalCom	Object
Account	Configuration	
BU Direct	SAP E/3	Financial
BU Direct		
AC Set		

Development

Doc	LogicalCom	Object
Account	Program Deve	
Package	Package	
Package		
Function Mod		
Transaction		

Testing


Doc	LogicalCom	Object
Test: Account		STEST
UNIT Test: Configuration		
Manual Test Case		

8th June 2011 | ProcessForum 2011 | 16

software AG

triVector

Health Check across Physical Repositories



QA and comparison reports to ensure:

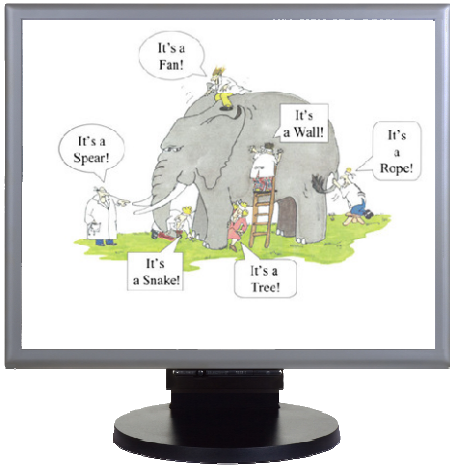
- Common definition
- Consistency
- Completeness
- Usage Analysis

8th June 2011 | ProcessForum 2011 | 17

software AG

triVector

ARIS is a key player to manage the „single truth“ across the ALM



8th June 2011 | ProcessForum 2011 | 18



ProcessForum

Changing the World - One Process at a Time

Thank You!